



# *East Link Extension & OMF East Project Updates*

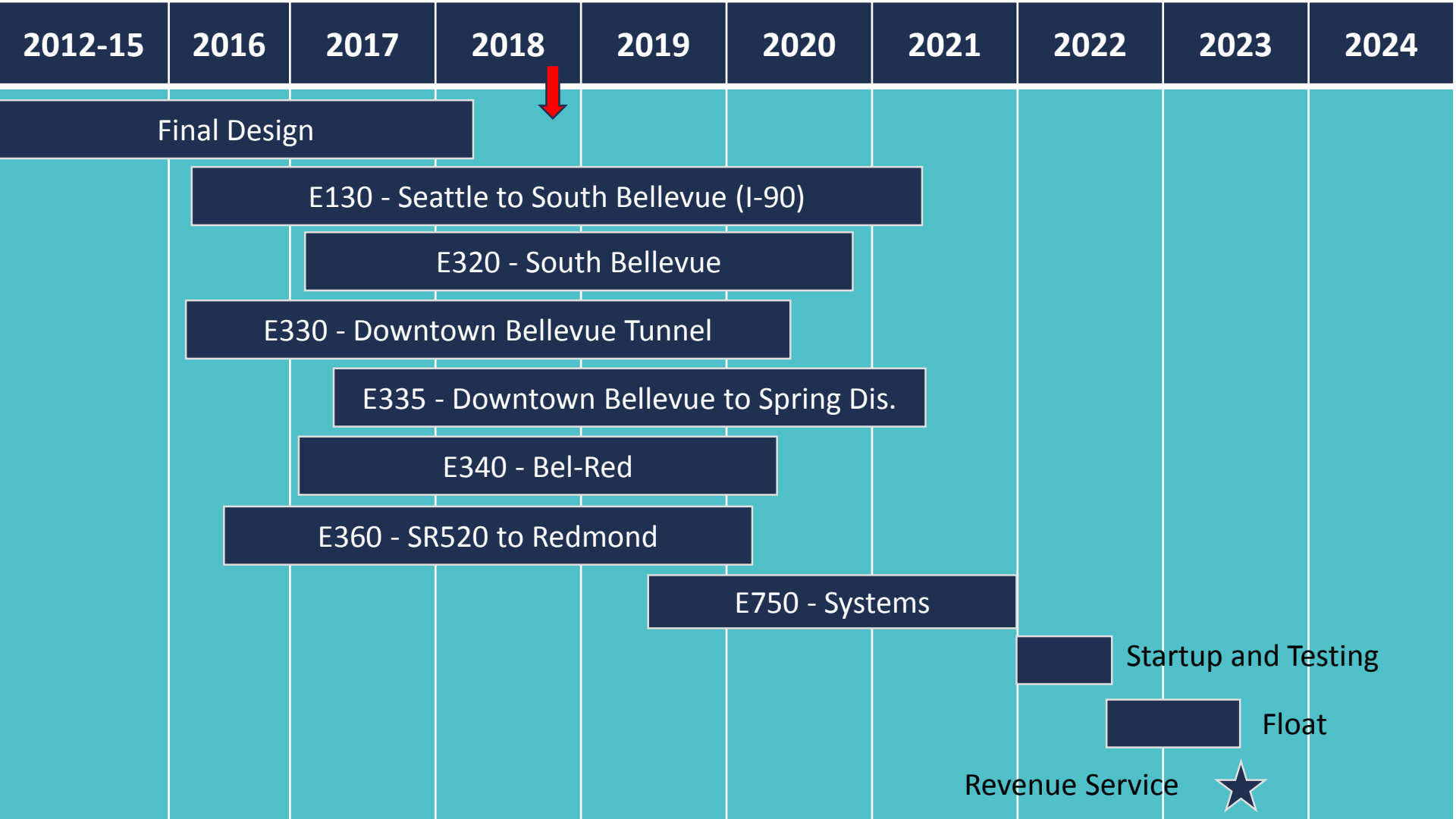
*Capital Committee Meeting – December 13, 2018*

# East Link Overview

## Cost & Schedule Snapshot

- **Baselined: April 2015**
- **Budget: \$3.67 Billion (YOE)**
- **Schedule: Revenue Service – June 2023**
- **Status:**
  - **All six civil contracts in active construction**
  - **Systems construction starting up**
  - **Within Budget**
  - **On Schedule**





2012-15

2016

2017

2018

2019

2020

2021

2022

2023

2024

Final Design

E130 - Seattle to South Bellevue (I-90)

E320 - South Bellevue

E330 - Downtown Bellevue Tunnel

E335 - Downtown Bellevue to Spring Dis.

E340 - Bel-Red

E360 - SR520 to Redmond

E750 - Systems

Startup and Testing

Float

Revenue Service





Key Milestones	Date
Bellevue Tunnel Hole through early	Q3 2018
I-90 Post Tensioning	Q3 2018
50% Construction Complete	Q2 2019
Redmond Technology Station Complete	Q1 2020
International District Station Tie-in	Q1 2020
East Link Project – Start of Service	2023

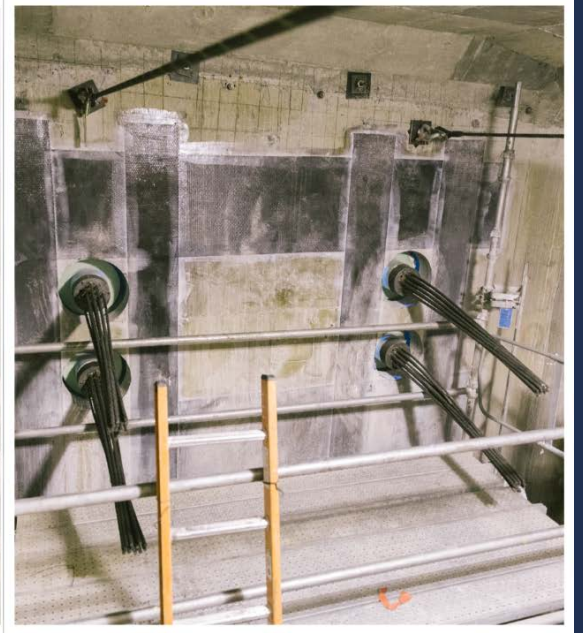
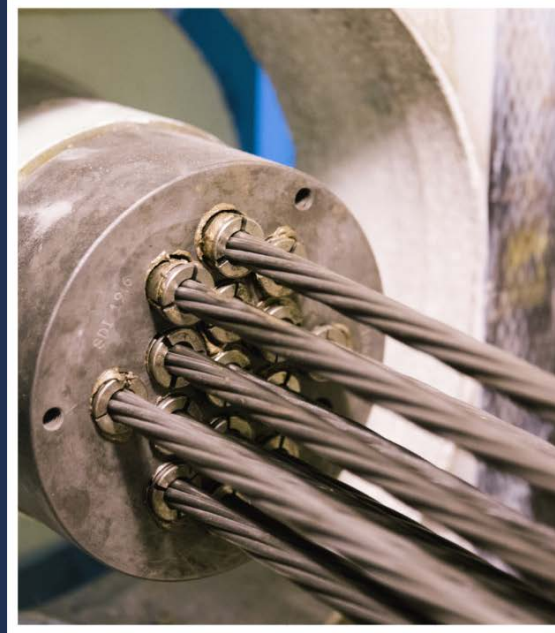
# East Link Financial Snapshot

<b>Project Budget</b>	<b>\$3,677.2 M</b>
Committed	\$3,028.8 M
Incurred	\$1,578.7 M

Notes: Financials as of October 2018. Dollars are in year of expenditure.  
Project Baselined in April 2015.



# I-90 ramps and floating bridge



Retrofitting bridges and ramps

# Judkins Park Station



Closure and Demolition of the D2 Ramp Flyover Stop





# Mercer Island Station



Station Entrance and Noise Walls





# I-90 Trackway



Direct Fixation Track on the Homer M. Hadley Bridge

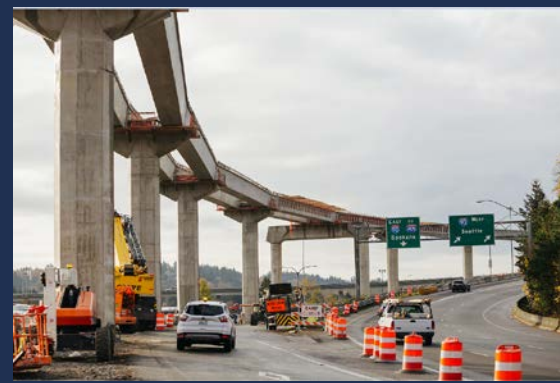


Ballasted Track on Mercer Island

# I-90 in South Bellevue



Long span construction over I-90



Typical spans near Bellevue Way SE



Balanced Cantilever Construction



# South Bellevue Station



Emerging station at the former S. Bellevue Park and Ride



# South Bellevue Way / 112<sup>th</sup>



Guideway trench along Bellevue Way SE



Construction of Rail undercrossing on 112<sup>th</sup> Ave SE



Construction of sound walls adjacent to Surrey Downs

# Downtown Bellevue Tunnel



Tunnel smoothing, waterproofing and invert slab preparation



# Downtown Bellevue Station



Concrete work at the North Portal (110<sup>th</sup>)



Sitework at the Station



# I-405 Crossing



# Wilburton Station



Elevated guideway over NE 8<sup>th</sup> St.



Wilburton Station Platform



Guideway construction - trestle



# Spring District

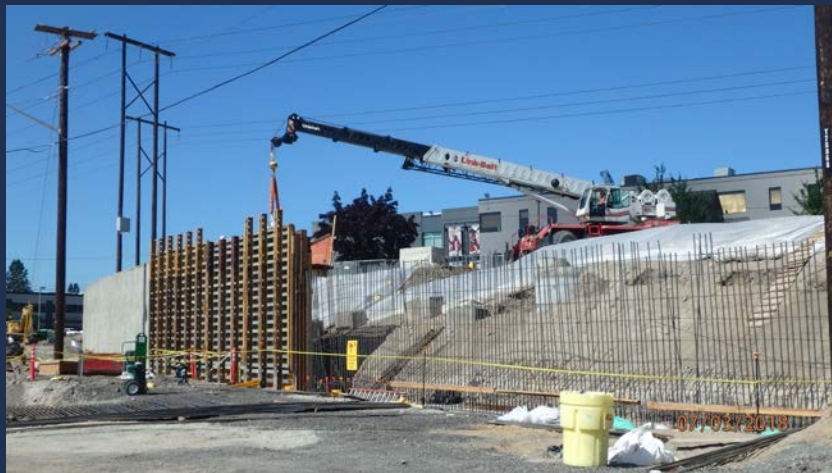




# 120<sup>th</sup> Station



# Bel-Red

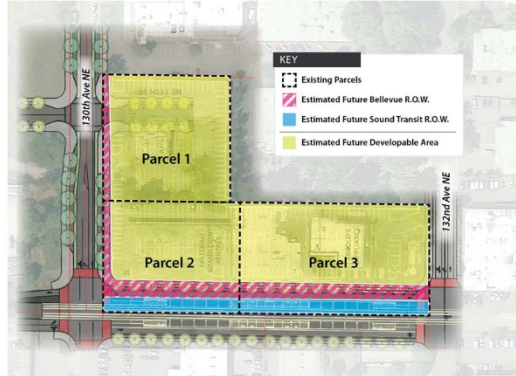




# 130<sup>th</sup> Station : TOD Opportunity Area



APPENDIX A: Before & After Summary and Development Program Comparison



HE: City of Bellevue Sound Transit 3 Station Area Property Transfer Considerations  
 March 1, 2017 (revised April 25, 2018)

# Overlake Village Station



Systems Ductbank Installation



Elevated Work Approaching OVS



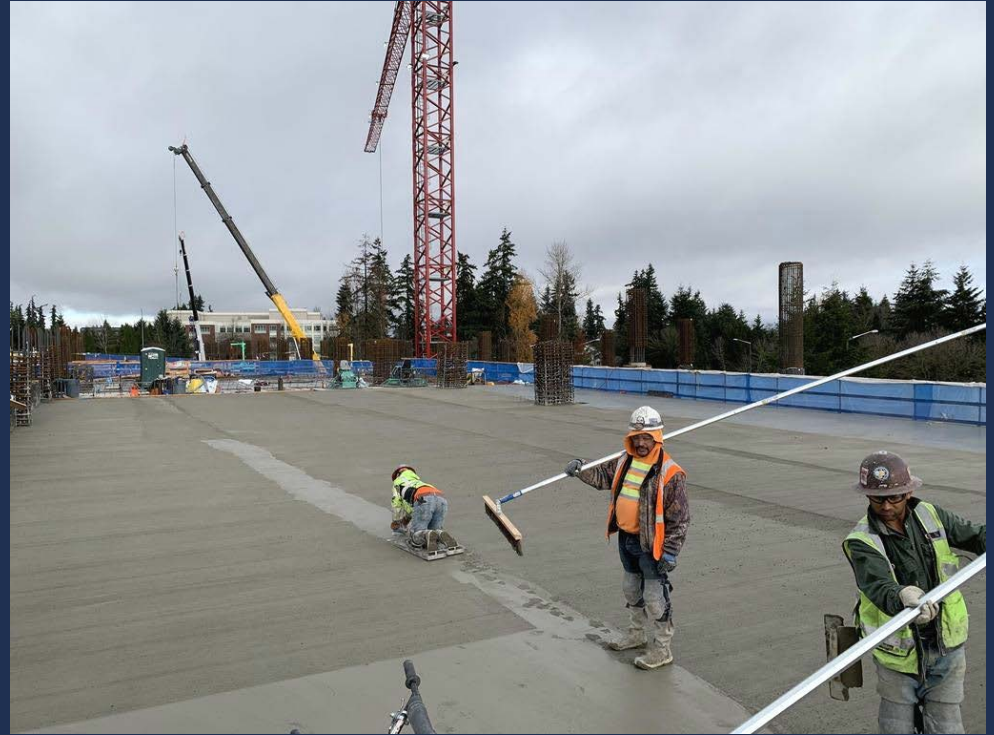
At-Grade Work Leaving OVS



# Redmond Technology Station



Station and Garage Layout



Parking Garage Deck Placement

# Key Issues for East Link

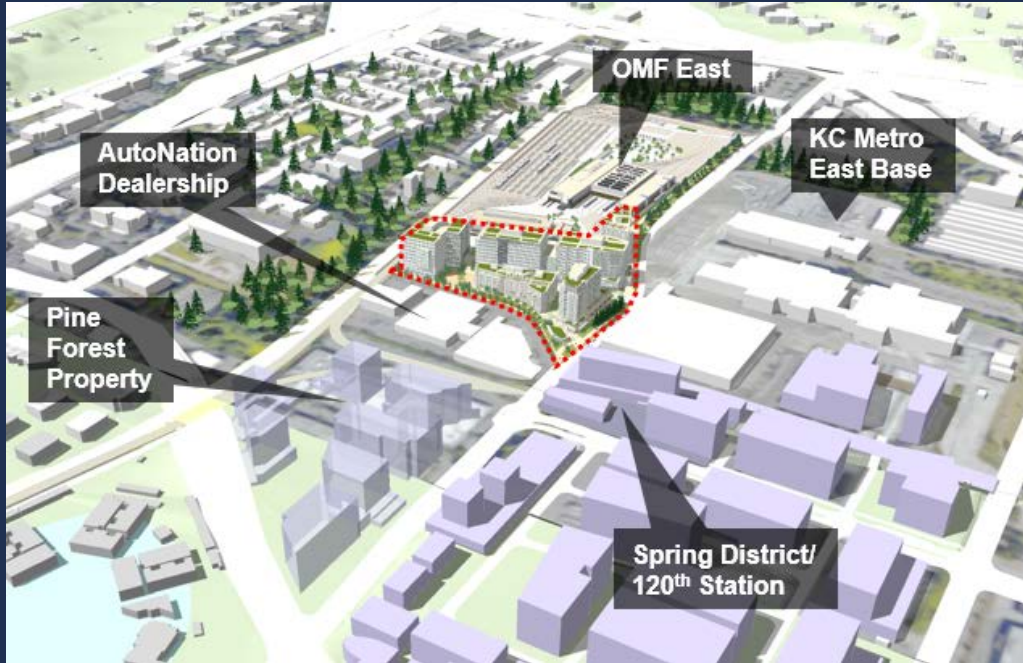
- Safety Awareness and Accident Prevention
- Design of Mercer Island Transit Interchange
- Resolving crossing of SCL Transmission Line in Bellevue
- Tie-in at the International District Station
- Microsoft Pedestrian Bridge Redesign
- Design Change Management during Construction
- Continued focus on Environmental Compliance



# OMF East Overview

## Cost & Schedule Snapshot

- **Baselined:** July 2016
- **Budget:** \$449.2 million (YOE)
- **Schedule:** complete – Dec.2020
- **Design-build status:**
  - **Permits complete**
  - **Design near complete**
  - **Construction underway on foundations and utilities**
  - **Within Budget**
  - **On Schedule**
- **Surplus property development:**
  - **Board review planned, 1<sup>st</sup> Q 2019**



Contracts: Hensel Phelps Construction (design builder)  
KBA Inc. (owners consultant)

# Link Operating and Maintenance Facility: East




Upcoming Milestones	Date
Final design issued for construction	Jan. 2019
Building foundations complete	Q1 2019
Exterior envelope complete – track installed	Q4 2019
Start of testing and commissioning	Q1 2020
Yard storage available for LRVs	June 2020
Substantial completion – Beneficial Occupancy	Sept. 2020



# OMF East progress and key issues

- Safety Awareness, Accident Prevention
- Managing design change
- Long-lead item procurement
- Prepare for commissioning
- Early LRV storage





[www.soundtransit.org/system-expansion/east-link-extension](http://www.soundtransit.org/system-expansion/east-link-extension)

